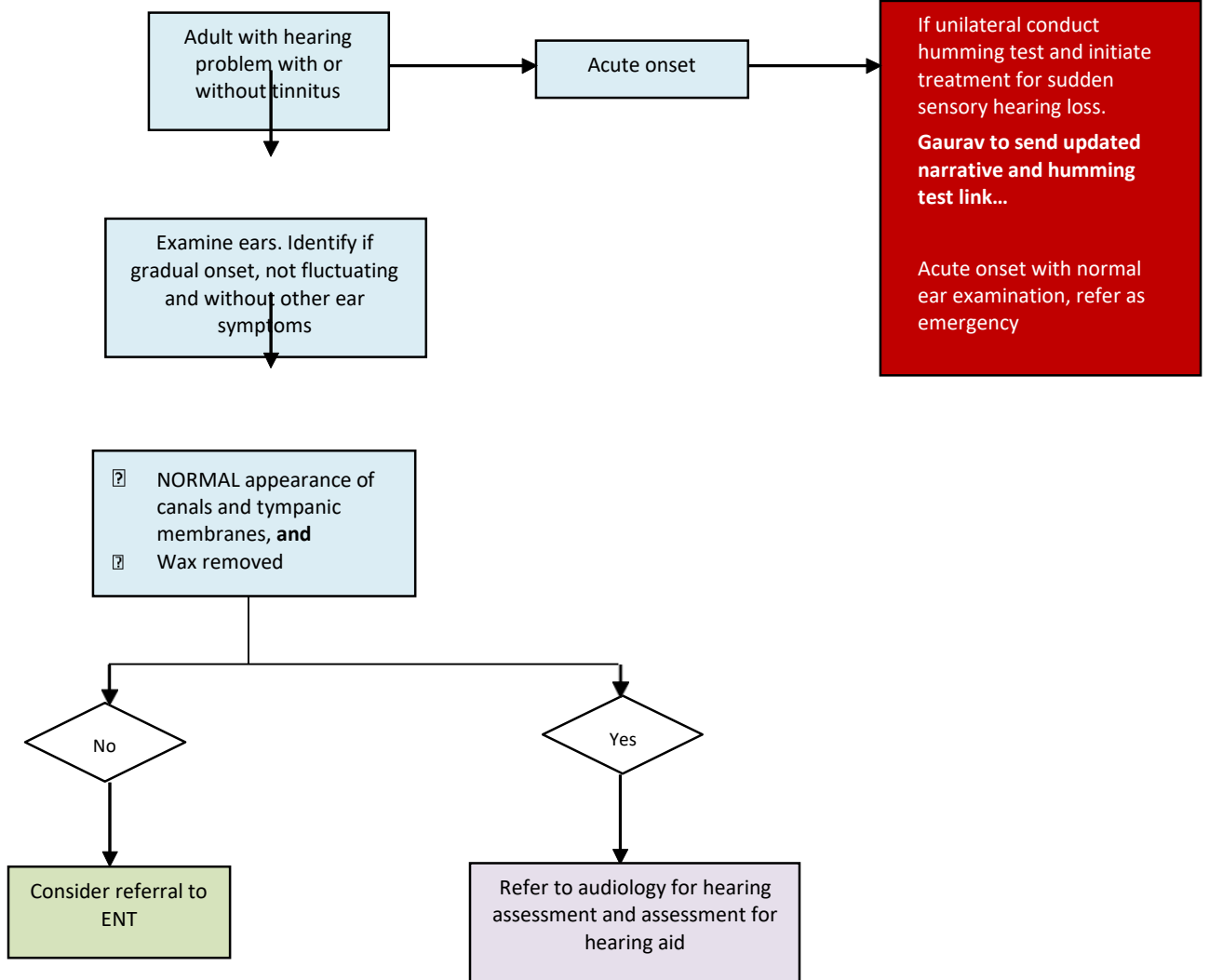


Hearing Problems in Adults



Criteria for direct referral to audiology - **Mark do we need to add anything else here....**

- Patients with non-fluctuating hearing loss of gradual onset
- Reassessment of hearing aid
- Patient known to the service
- Any ear wax has been removed
- **NORMAL appearance of canals and tympanic membranes, and**
- Any pre-existing ear condition has been investigated by ENT surgeon or audiologist

