

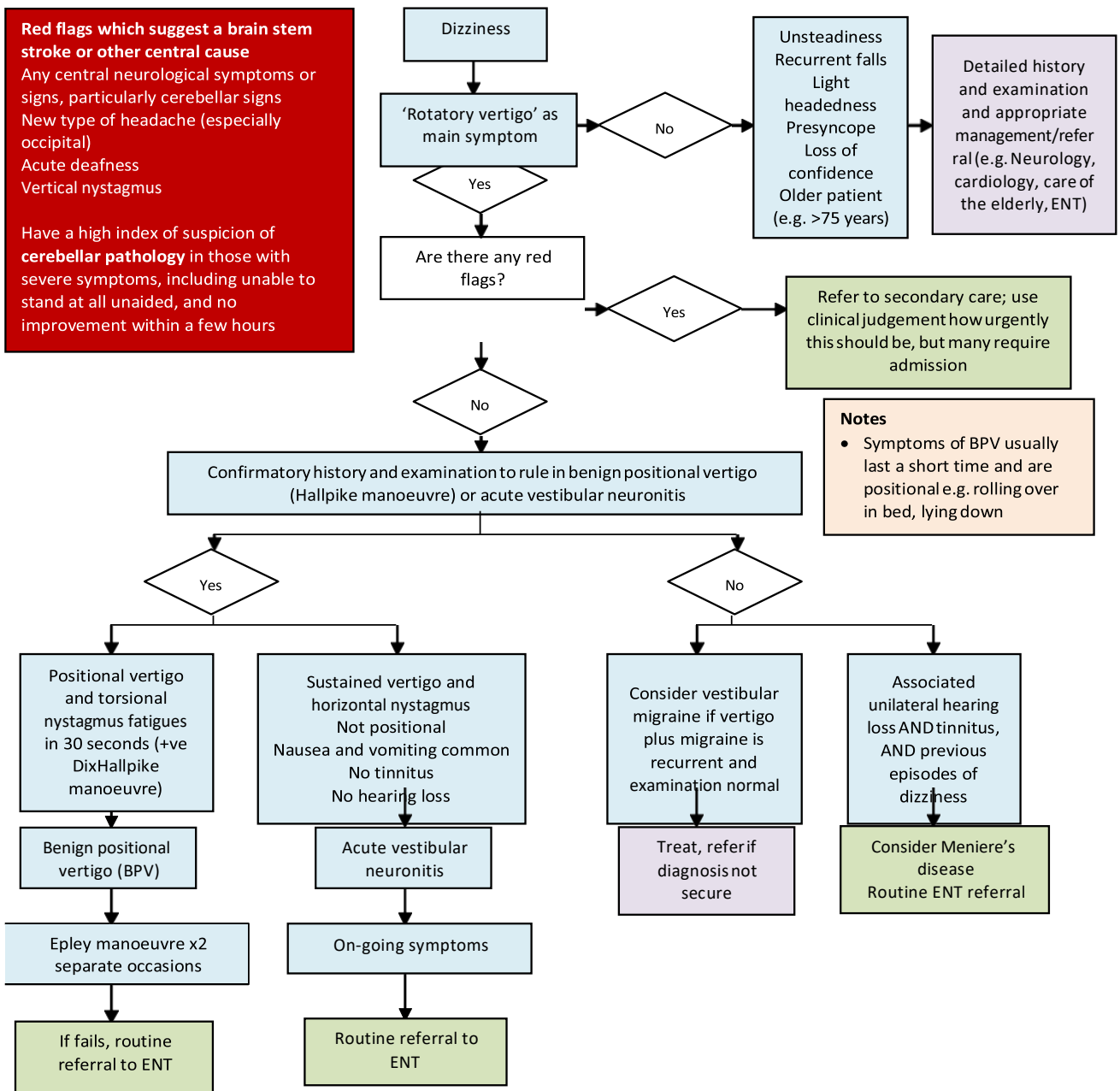
Vertigo

Patient information at: http://www.entuk.org/patient_info/ear/dizziness_html

ENT Advice & Guidance can be accessed via e-RS

Red flags which suggest a brain stem stroke or other central cause
 Any central neurological symptoms or signs, particularly cerebellar signs
 New type of headache (especially occipital)
 Acute deafness
 Vertical nystagmus

Have a high index of suspicion of **cerebellar pathology** in those with severe symptoms, including unable to stand at all unaided, and no improvement within a few hours



Notes

- Symptoms of BPPV usually last a short time and are positional e.g. rolling over in bed, lying down

Notes

- To distinguish vertigo from non-rotatory dizziness consider asking; "Did you just feel lightheaded or did you see the world spin round as though you had just got off a playground roundabout"
- Patient with 'dizziness' but not vertigo, need history and examination, including cardiovascular and neurological examination. Some may need referral for further investigation e.g. (Neurology, cardiology, elderly care)
- BHR CCGs have restricted prescribing for travel related vertigo (travel sickness)

For more information about determining the cause of vertigo, refer to the CKS website (<http://www.cks.nhs.uk/vertigo/management#-407680>)